

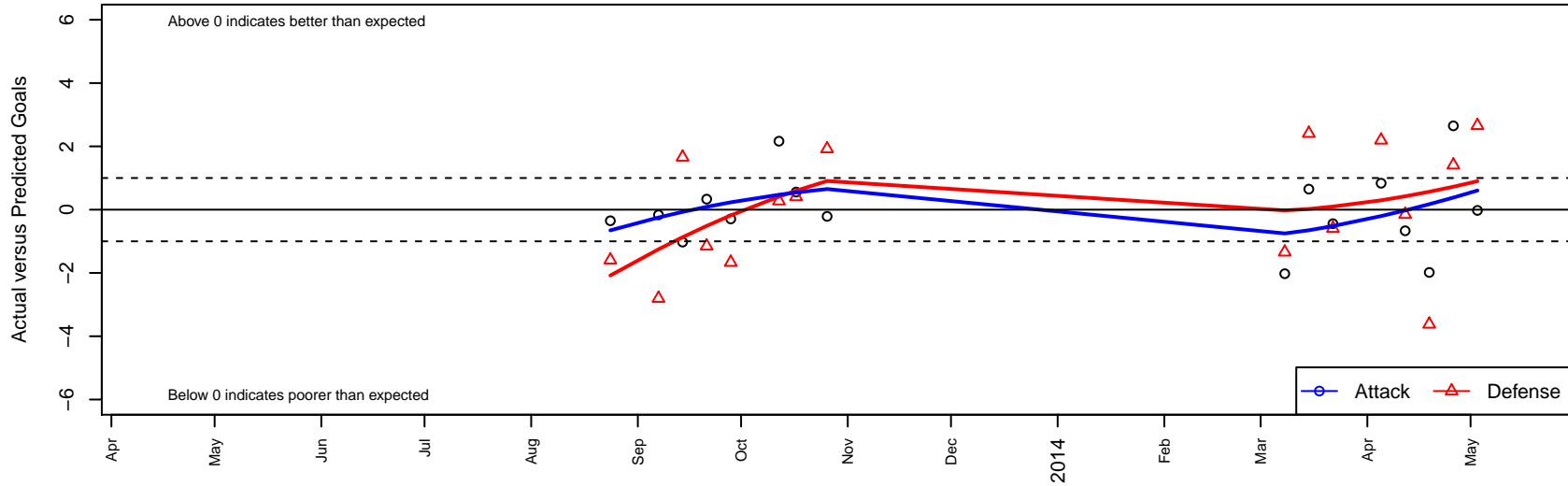
Cobra SC B00

, ID
 B00 total strength=896
 attack=2.06 defense=0.95
 fall league = Idaho D3 Division 1 U13, Spr Idah
 alt names used:
 COBRA SOCCER CLUB

Venues played:
 Idaho D3 Division 1 U13
 Spr Idaho D3 U13 Boys Division 1 U13



Cobra SC B00
 Dots are actual minus expected GF (blue circles) and GA (red triangles).
 Blue line is smoothed change in attack strength. Red is smoothed change in defense strength.



	date	home		away		venue	pred.home	pred.away
27076	2014-05-03	Cobra SC B00	3	Boise Nationals Athletico B00	0	Spr Idaho D3 U13 Boys Division 1 U13	3.02	2.66
26764	2014-04-26	Cobra SC B00	5	Real Middleton AC Milan B00	1	Spr Idaho D3 U13 Boys Division 1 U13	2.35	2.41
26596	2014-04-19	Cobra SC B00	0	Boise Nationals Galaxy White B01	6	Spr Idaho D3 U13 Boys Division 1 U13	1.98	2.38
26076	2014-04-12	Boise Nationals Madrid B00	6	Cobra SC B00	0	Spr Idaho D3 U13 Boys Division 1 U13	5.85	0.67
25708	2014-04-05	Cobra SC B00	2	Idaho Rush Nike B00	1	Spr Idaho D3 U13 Boys Division 1 U13	1.16	3.20
25206	2014-03-22	Cobra SC B00	0	FC Nova SuperNova Black B00	5	Spr Idaho D3 U13 Boys Division 1 U13	0.44	4.41
24651	2014-03-15	Real Middleton AC Milan B00	0	Cobra SC B00	3	Spr Idaho D3 U13 Boys Division 1 U13	2.41	2.35
24011	2014-03-08	Boise Nationals Athletico B00	4	Cobra SC B00	1	Spr Idaho D3 U13 Boys Division 1 U13	2.66	3.02
15894	2013-10-26	FC Nova White B00	0	Cobra SC B00	1	Idaho D3 Division 1 U13	1.92	1.21
14698	2013-10-17	Cobra SC B00	1	FC Nova SuperNova Black B00	4	Idaho D3 Division 1 U13	0.44	4.41
13906	2013-10-12	Neto United Vasco B00	1	Cobra SC B00	5	Idaho D3 Division 1 U13	1.27	2.84
11946	2013-09-28	Idaho Rush Nero B00	3	Cobra SC B00	4	Idaho D3 Division 1 U13	1.33	4.29
10989	2013-09-21	Cobra SC B00	1	Boise Nationals Madrid B00	7	Idaho D3 Division 1 U13	0.67	5.85
10019	2013-09-14	Boise Nationals Athletico B00	1	Cobra SC B00	2	Idaho D3 Division 1 U13	2.66	3.02
9071	2013-09-07	Cobra SC B00	1	Idaho Rush Nike B00	6	Idaho D3 Division 1 U13	1.16	3.20
7999	2013-08-24	Cobra SC B00	2	Real Middleton AC Milan B00	4	Idaho D3 Division 1 U13	2.35	2.41